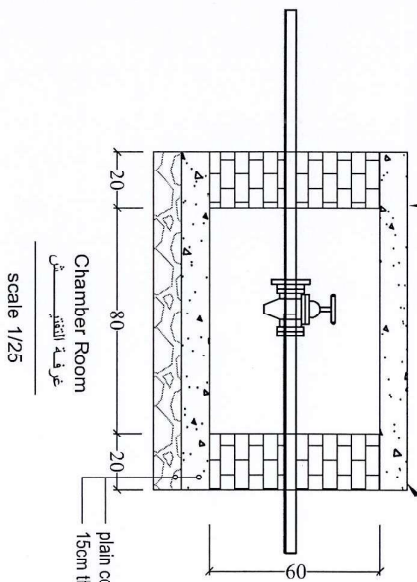
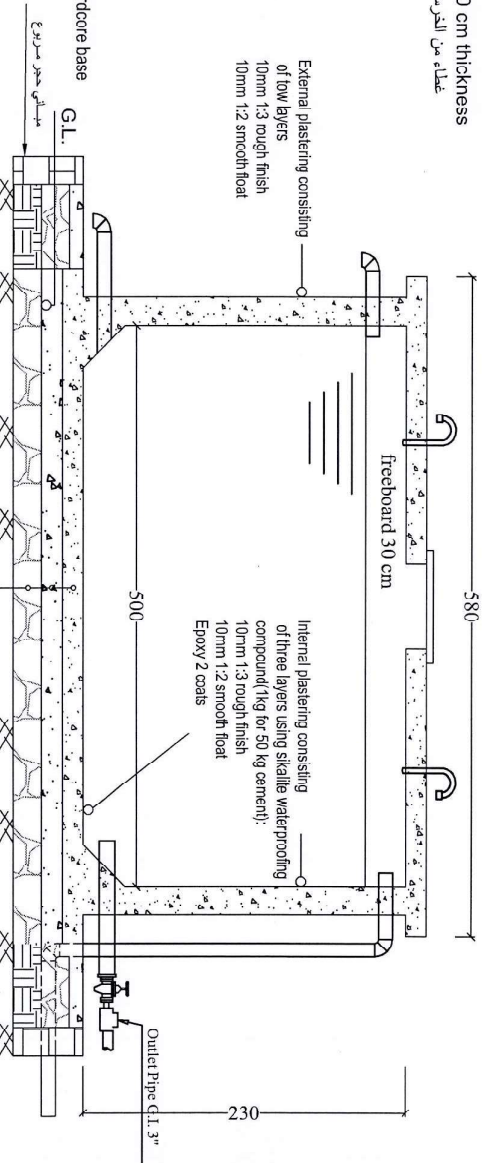




Reinforced cover 10 cm thickness  
غطاء من الخرسانة المسلحة 10 سم

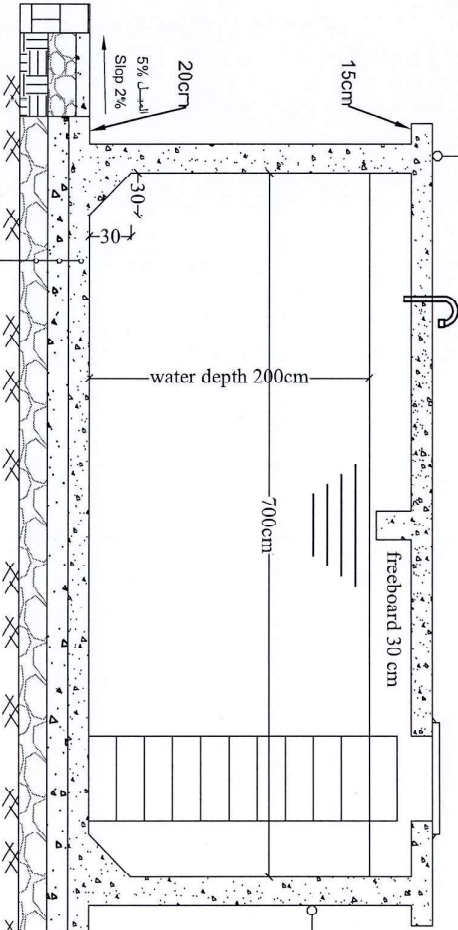


Reinforced cover 10 cm thickness  
غطاء من الخرسانة المسلحة 10 سم



Section in short direction  
مقطع بالاجهة القصيرة  
1/50

20 cm Thick 1:1.5:3 Concrete Roof Slab (dosage 380 kg/m<sup>3</sup>)



Section in long direction  
مقطع بالاجهة الطويلة  
1/50

25 cm thick 1:1.5:3 reinforced concrete slab (dosage 380 kg / m<sup>3</sup>)  
15 cm thick 1:2:4 concrete slab (dosage 300 kg / m<sup>3</sup>)  
30cm thick compacted hardcore base

25 cm thick 1:1.5:3 concrete Roof Wall (dosage 380 Kg/m<sup>3</sup>)  
10 cm thick 1:2:4 concrete slab (dosage 300 kg / m<sup>3</sup>)  
15cm thick compacted hardcore base  
Soil compacted well with water spring

Note:  
F<sub>c</sub>=250 kg/m<sup>3</sup>  
F<sub>y</sub>=2700 kg/cm<sup>2</sup>  
All dimensions are in centimeters

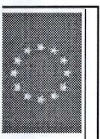
Bakel Salem  
Bakel Salem

Promoting Resilience and Social Cohesion Through an Integrated Response to Vulnerable Communities in Yemen

15DKY-Tahi District: Al Ma'arrat al Amriyya Construct Reinforced Tank and Collective water point For Water Project- Al Gannak Village

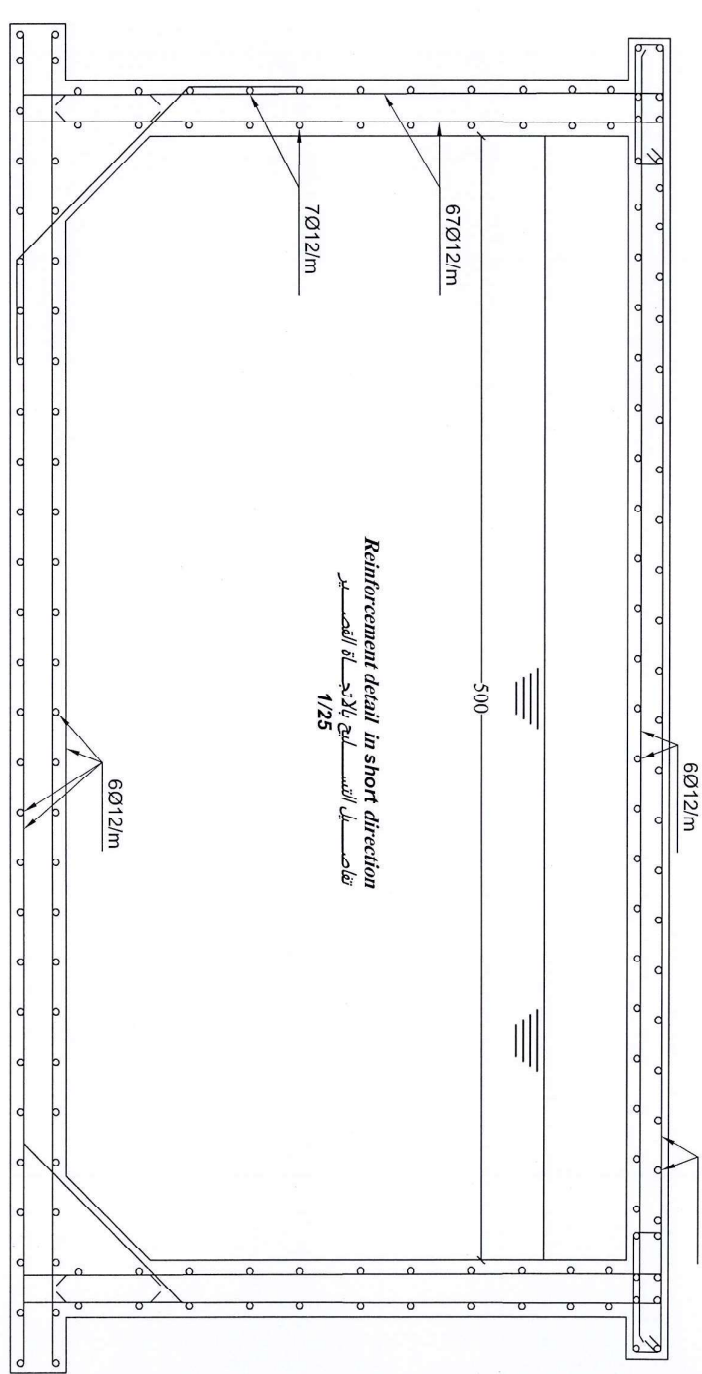
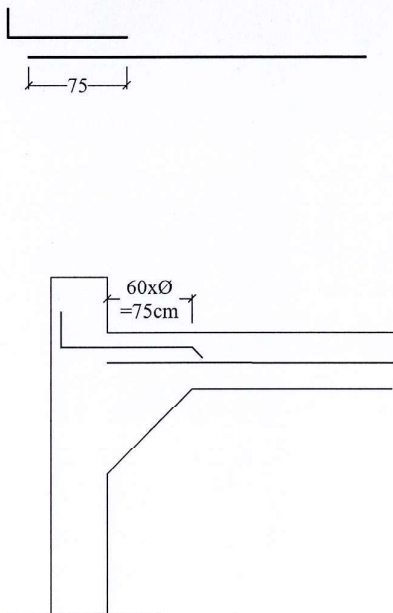
Designed and drawn by: WASH Engineer / Bakel Salem

Approved by: WASH OFFICER / S. L. S. VIA OTD

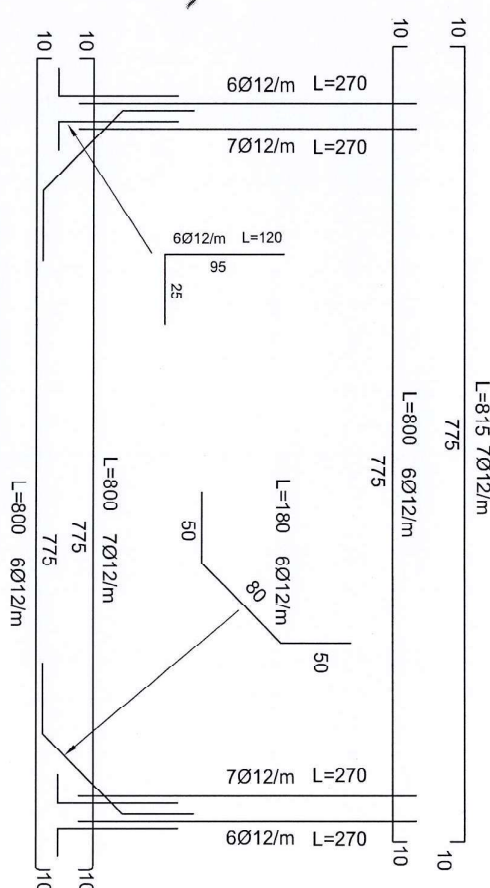


Funded by The European Union

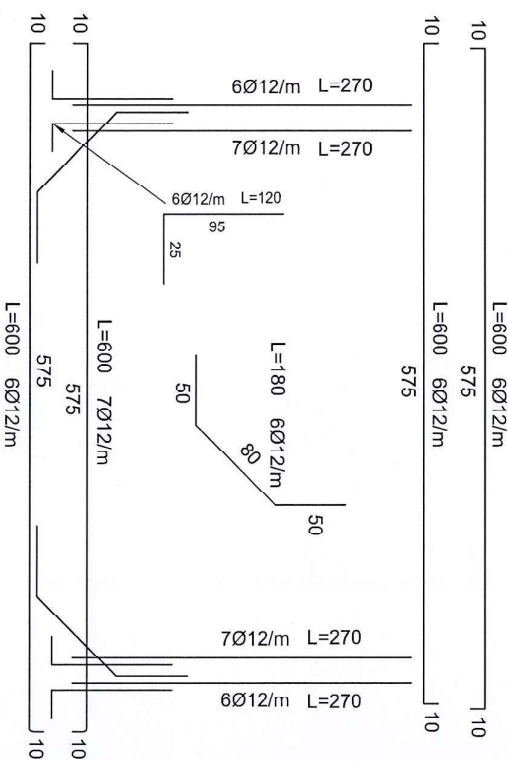
Agency For Technical Cooperation and Development ACTED



*Reinforcement detail in short direction*  
 تفاصيل التسليح بالاجه القصير  
 1/25



*Reinforcement Detail in Long Direction*  
 تفاصيل التسليح بالاجه الطويل  
 1/50



*Reinforcement Detail in Short Direction*  
 تفاصيل التسليح بالاجه القصير  
 1/50

*Bakel Salem*

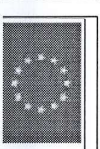
Promoting Resilience and Social Cohesion Through an Integrated Response to Vulnerable Communities in Yemen

District: 15DKY-Tahli Al-Ma'munah, Al-Ma'munah, Aden

Construct Reinforced Tank and Collective water point For Water Project- Al Gunak Village

Designed and drawn by:  
 WASH Engineer / Bakel Salem

Approved by:  
 WASH OFFICER / C. L. S. SIA CTM

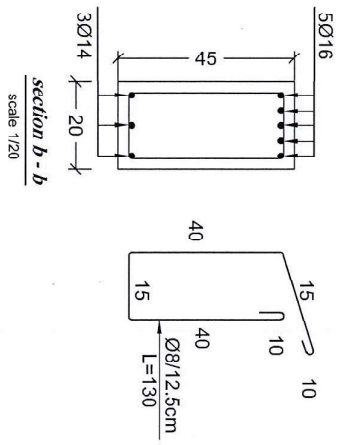
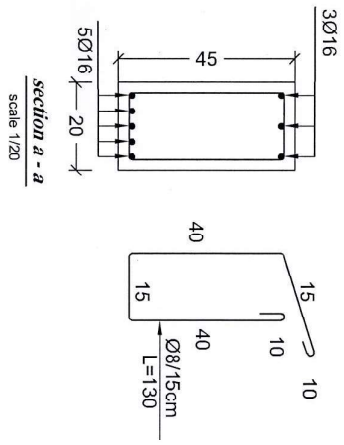
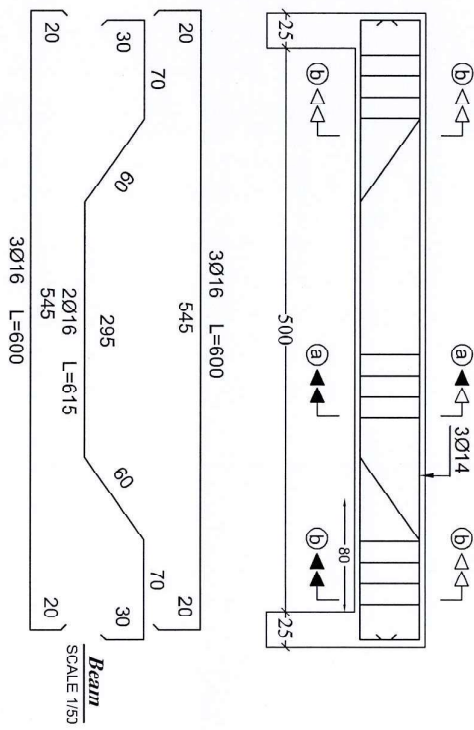


Funded by  
 The European Union





*Bakel Salem*

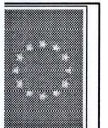


Promoting Resilience and Social Cohesion Through an Integrated Response to Vulnerable Communities in Yemen

15DKY-Iah | District: Construct Reinforced Tank and Collective water point For Water Project- AlGinnak Village

Designed and drawn by:  
WASH Engineer / Bakel Salem

Approved by:  
WASH Engineer / Bakel Salem



Funded by  
The European Union

Agency For Technical  
Cooperation and Development  
**ACTED**

