



# Annex A

## Clarification picture and drawing of the site

T/10DVI/57F/RWI/ERB/20/07/2020/001















CE IE1

Asynchronous motor 3~ [www.felm.it](http://www.felm.it)

TYPE Y2 315		Nr.		IP 56	IM B3	IEC 60034-1
Hz 50	r/min	Δ	V. 400	kW 110		A. 208
		Y	V. 690	kW 110		A. 115
Hz 60	r/min	Δ	V. 480	kW 126		A. 255
		Y	V. 830	kW 126		A. 115
Cos φ		S1	Ins.cl. F	920	kg	
						PTC 130

Brgs. DE

:NDE

Design and Quality by FELM





25

CE

100% 2. Çatı No. 1  
Eskişehir, Umraniye  
İSTANBUL, TÜRKİYE  
+90 216 486 95 00

TP: SKM 125/3	
Y: 2017	No: 1717159
Q: 200 m³/h	H: 90 m
P: 90 kW	D: 308 mm
n: 1500 rpm	



MOT IE2		4616514887		S1	
M2E 280 M 4		B3		IE2-94.2	
MOT	1.C.L. F	IP	55	A	cosφ
V	Hz	kW	1/min		Eff %
230	50	90	1480	158	0.87
400	50	103	1780	158	0.87

Sadece bu kontrol ile kullanılır / Use with VSD Only!  
 MADE IN TURKEY/ÜT./PD.2016 TS EN 60034-1



**TAMAK IE2**  

2E 280 M 4 461651488

MOT.	I.CL.	P	IP 55	B3	S1	
V	Hz	kW	1/min	A	cosφ	Eff %
380	50	90	1480	158	0.87	IE2-94.2
460	60	103	1780	158	0.87	

Sadece hız kontrol ile kullanılır / Use with VSD Only!

MADE IN TURKEY-Ö.T./P.D.2016 TS EN 60034-1





















P.Max: 16 bar

S

Year: 2014

Mat: GGG40





CE IE1

Asynchronous motor 3~ [www.felm.it](http://www.felm.it)

Asynchronous motor 3~		Nr. DM 3545406004		IP 56	IM B3	IEC 60034-1
TYPE Y2 315 S2		Δ	V. 400	kW 110		A. 237
Hz 50	2970 r/min	Y	V. 230	kW 110		A. 115
Hz 60	3600 r/min	Δ	V. 480	kW 126		A. 237
		Y	V. 280	kW 126		A. 115
Cos φ 0.85		S1	Ins.cl. F	320	kg	
Brgs. DE		:NDE				PTC 15

Design and Quality by FELM

BEARING LUBRICATED AT FACTORY  
RE-LUBRICATE AS PER BELOW

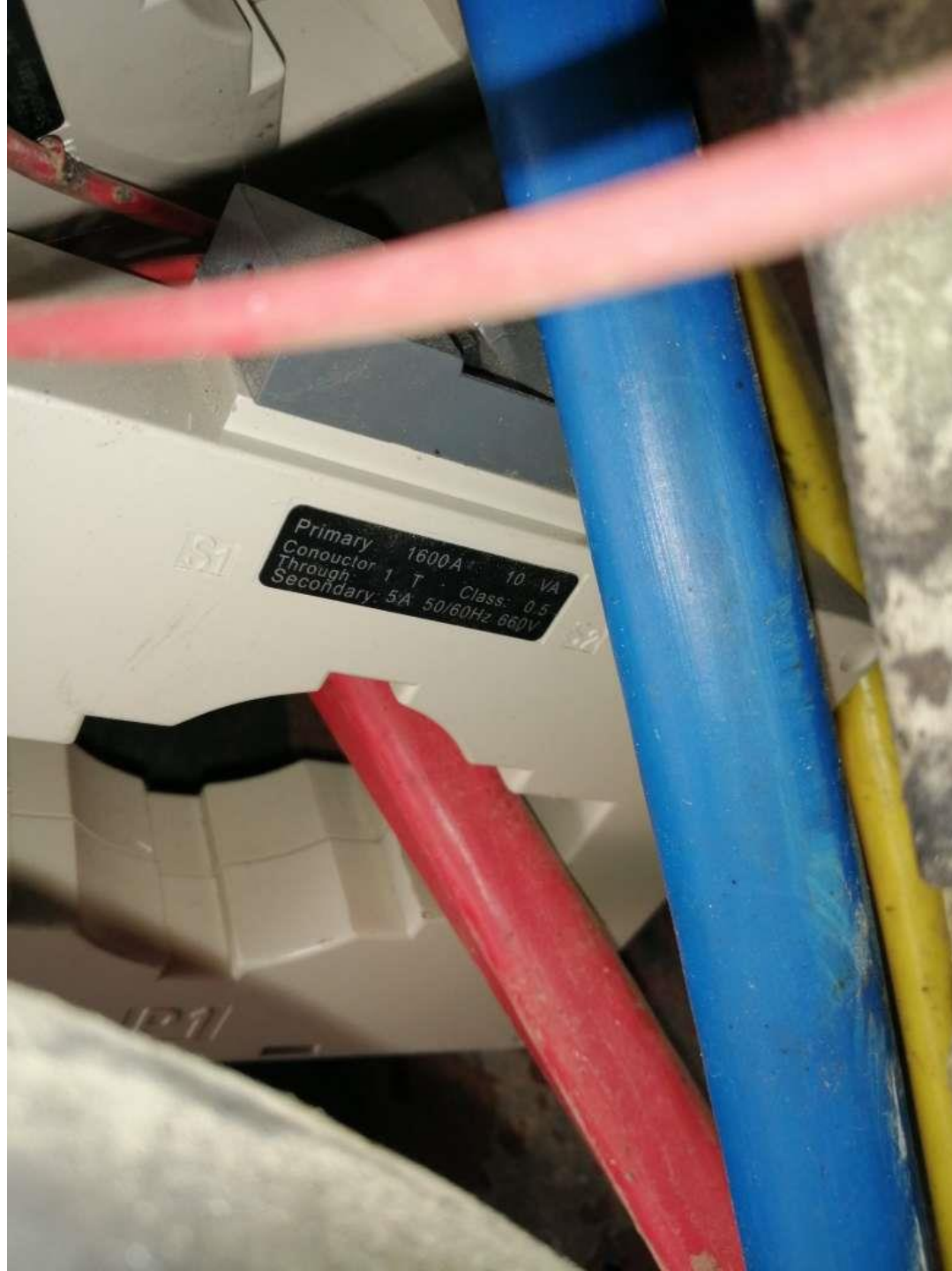
CENTER HEIGHT	BEARING TYPE	VOLUME	INTERVAL	GREASE
H160~200	6309~6312	30g	2000 HOURS	CALTEX SRI-2#
H225~315	6313~6319	50g		
≥ H355	6320~6328	80g		











Primary 1600A 10 VA  
Conductor 1 T  
Through  
Secondary 5A 50/60Hz 660V  
Class: 0.5













**LS CONTACTOR 185A**

AC3 IEC	EN	VDE	BS	GB	K60947
60947	60947	0660	5424	14048.4	-4-1
VAC	240	440	550	690	
kV	55	90	110	110	
A	185	185	180	120	
AC1=11h=230A U <sub>i</sub> =1,000V U <sub>imp</sub> =8kV					



This Device Meets Exceeds NEMA/IEE/IEC requirements

	1PH			3PH		
VAC	120	240	208	240	480	600
UL HP	15	30	60	60	125	125

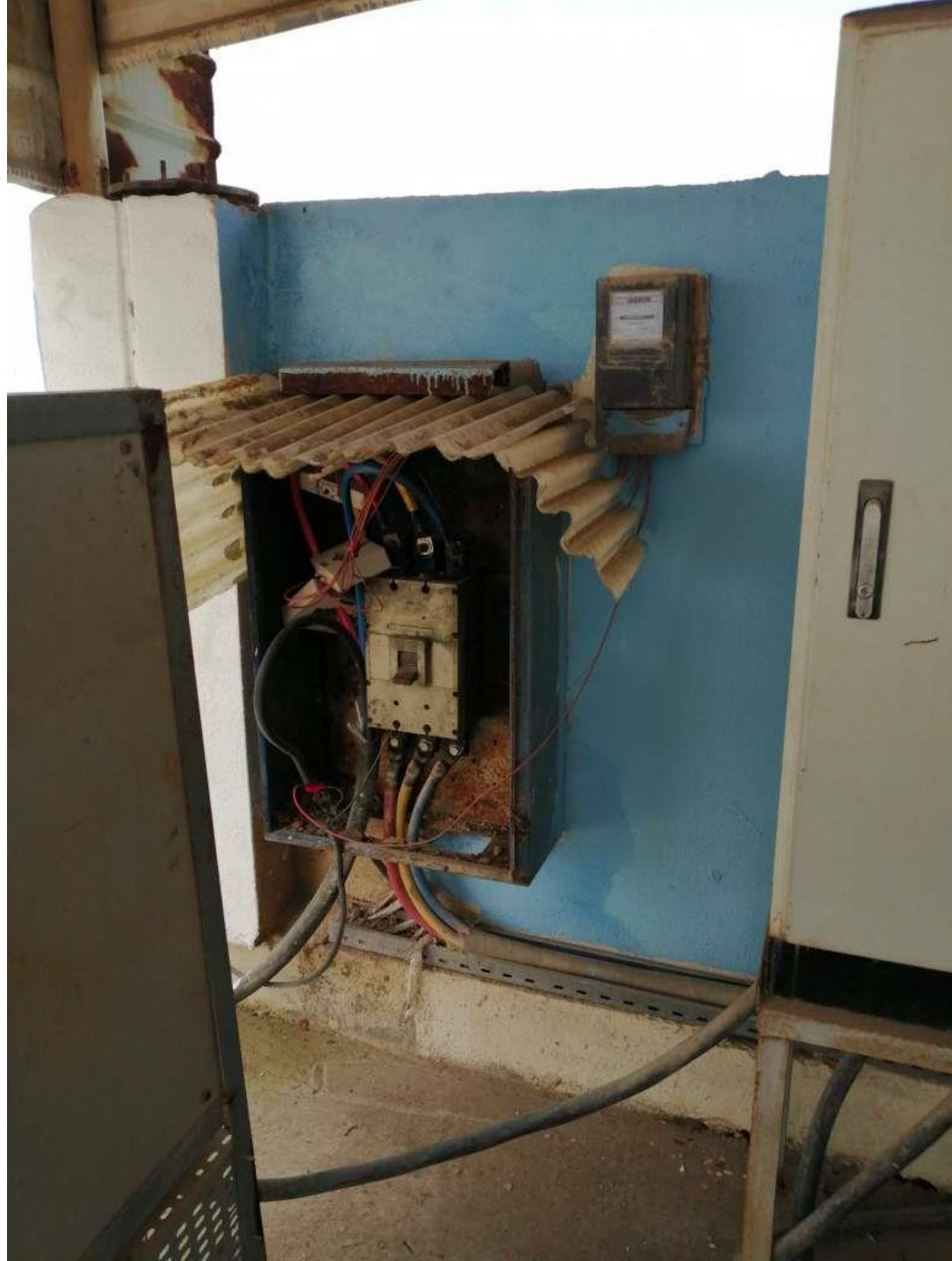
Continuous current : 230A Aux Cont: A600 P600  
When protected by 400A time delay fuses/CB 400A  
Short circuit 10kA RMS Sym. 600V Max. Break all lines  
AWG 14-7 75°C Cu Stranded Wire

P010407402553DMPY001 170412

Torque: 130 lb.in.  
MADE IN KOREA  
Inspected By Y.J.J  
127, LS-IL, YAT119, KOREA



































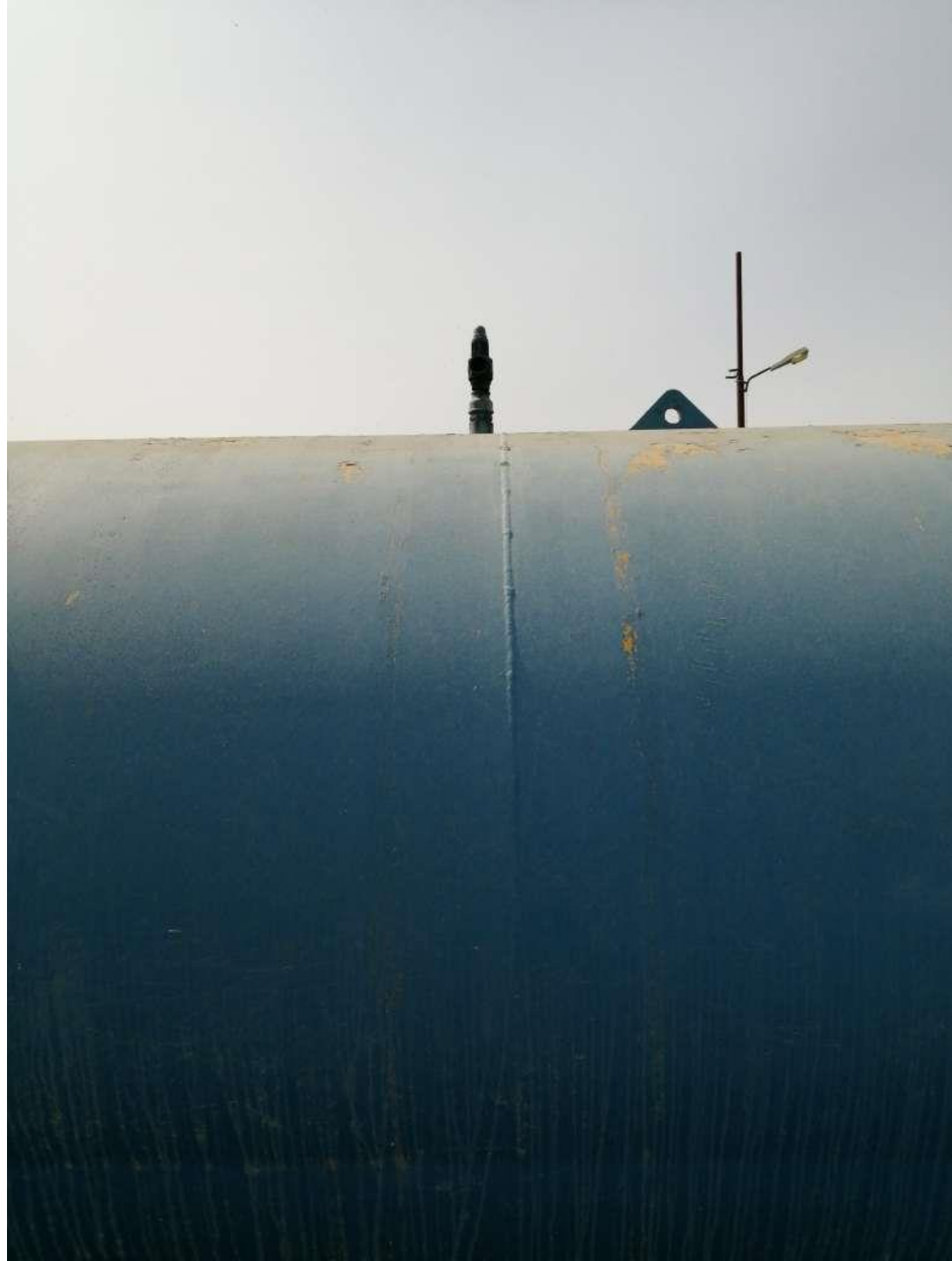














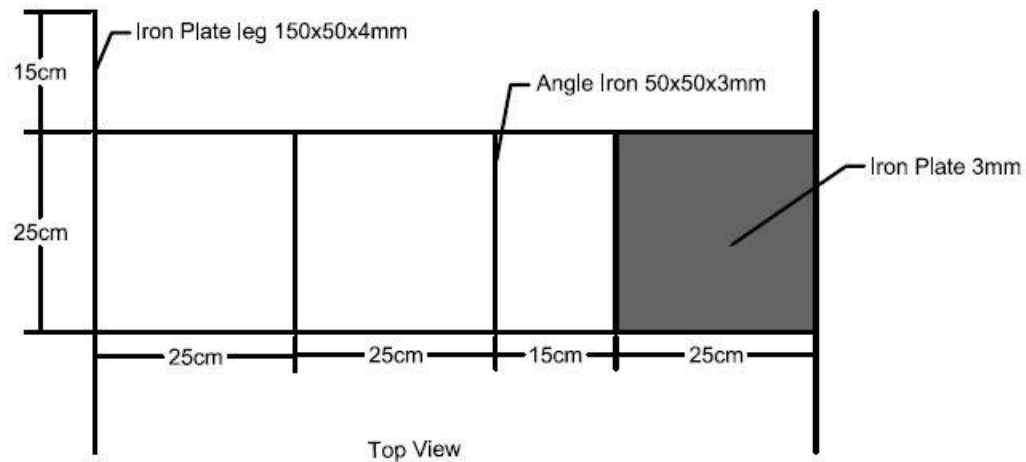
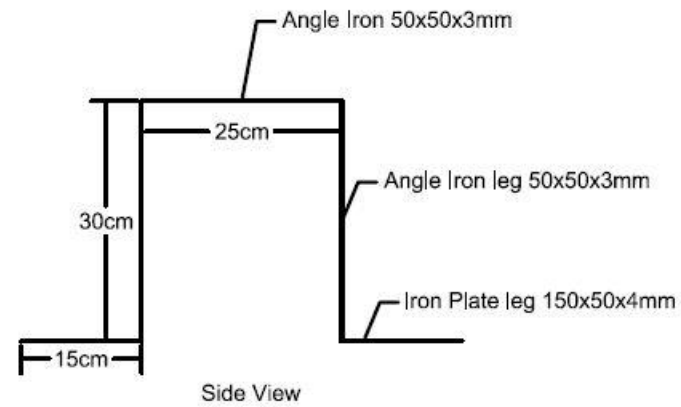
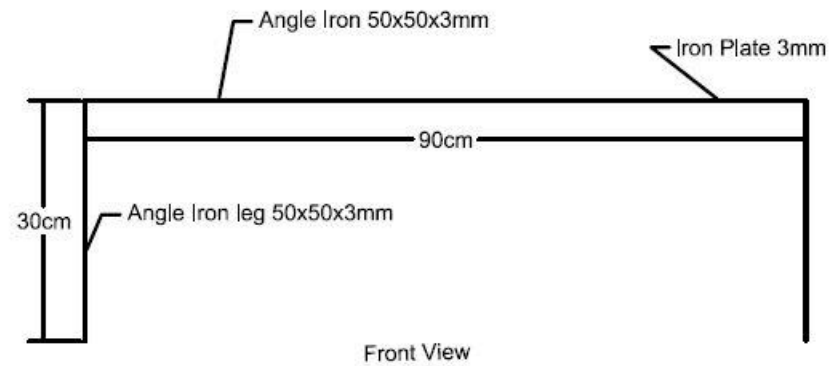








## Base plate of mixer and dosing pump



Project Name: Rehabilitation of Arj Water Treatment Plant

Coordinates: N: 36.19585, 43.21928

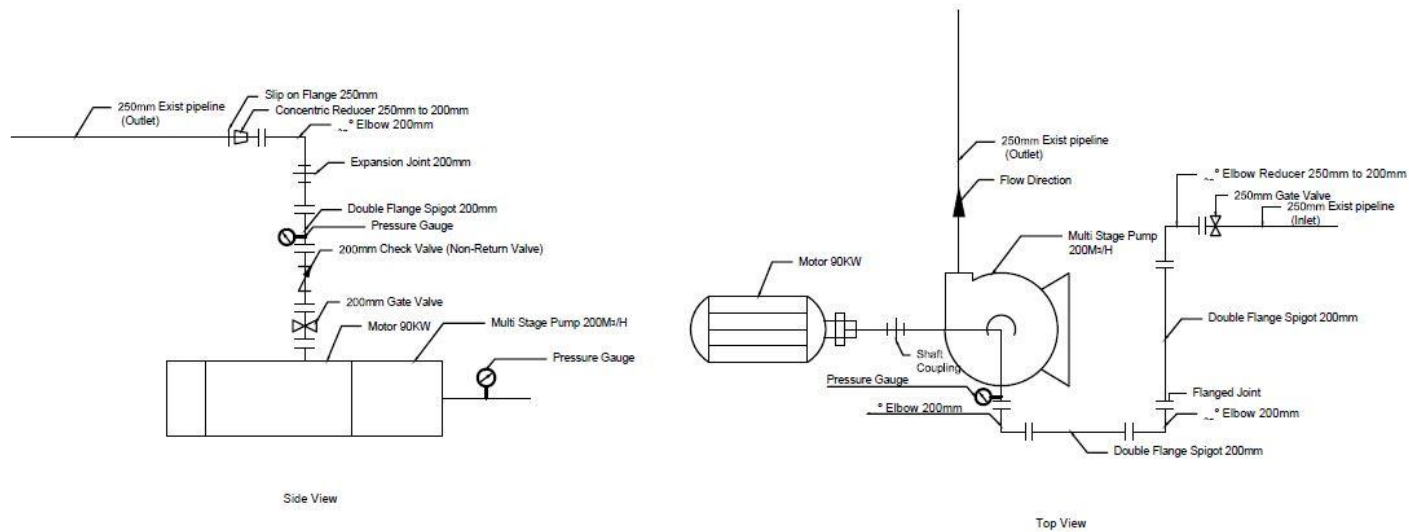
ACTED project Code: 10DV1

Sheet Name: Base plate of Mixer and dosing pump

Sheet No.:

Designed By: ACTED WASH Team

## Plan of multi stage pump



Project Name: Rehabilitation of Aurj Water Treatment Plant

Coordinates: 36.19585N, 43.21928E

ACTED project Code: 10DVI

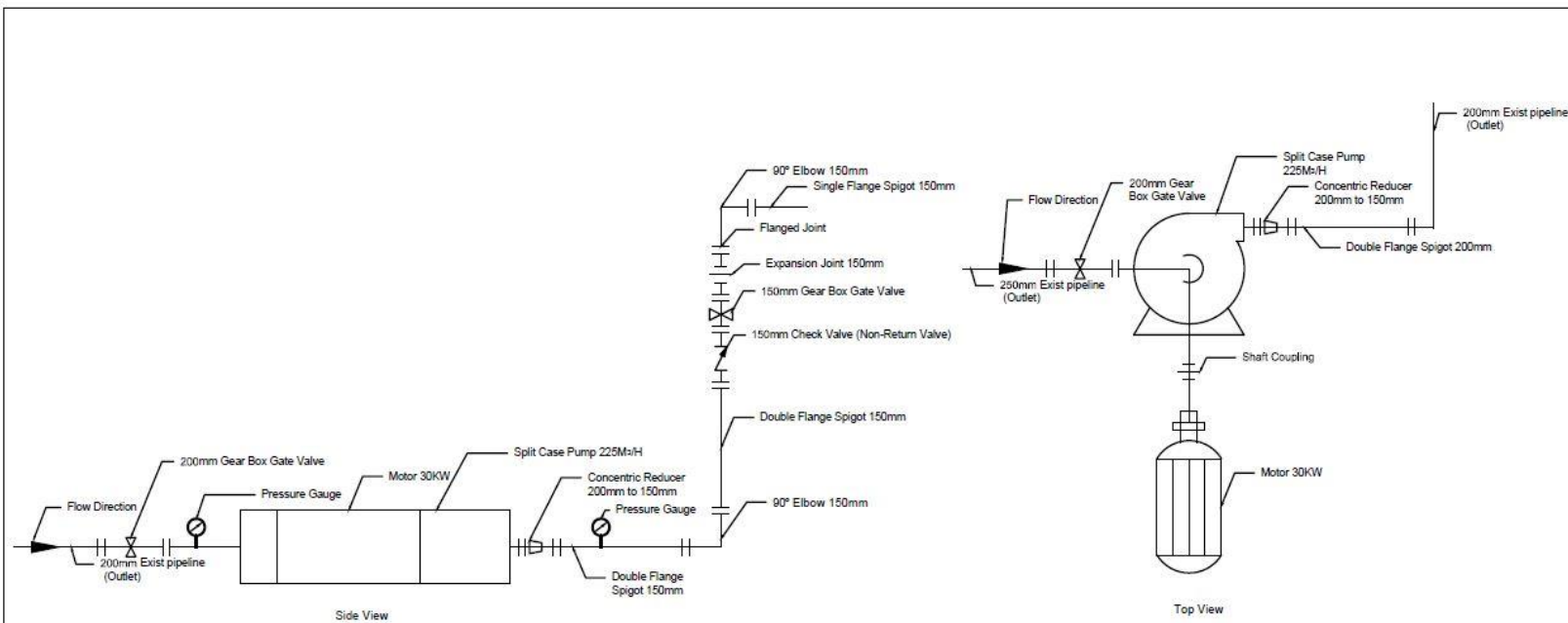
Sheet Name: Plan of Multi Stage Pump

Sheet No.: 1

Designed By: ACTED WASH Team



## Plan of split case pump



Project Name: Rehabilitation of Aurij Water Treatment Plant

Coordinates: 36.19585N, 43.21928E

ACTED project Code: 10DVI

Sheet Name: Plan of Split Case Pump

Sheet No.: 2

Designed By: ACTED WASH Team