

Contact:

south.sudan@acted.org

www.acted.org

@ACTEDSouthSudan



ACTED South Sudan Country Strategy

2017 update

Vision

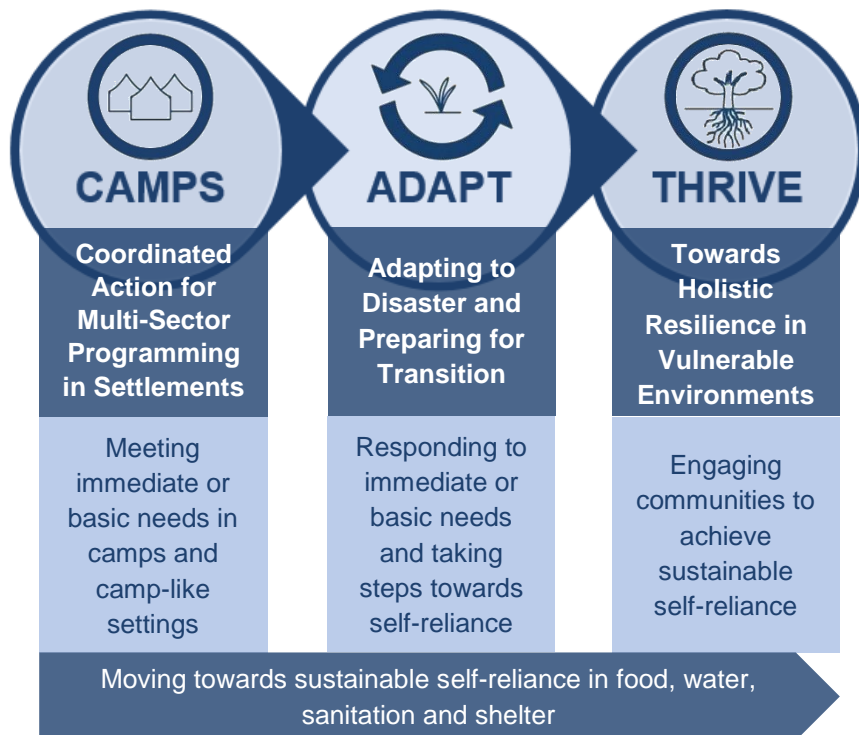
A prosperous South Sudan built by integrated and resilient communities.

Mission

Provide quality, information-driven relief, recovery and development programming through long-term engagement with crisis-affected communities.

Strategy statement

From a total reach of around 500,000, transition 50,000 people to self-reliance by 2020, by supporting crisis-affected communities along the relief-recovery-development pathway through integrated CAMPS, ADAPT and THRIVE programming.



Suite of Operational Initiatives

Systems



ASSIST

ACTED Support System and Issue Tracker

FAST

Function and Sub-Function Trees

Programs



ARP

ACTED Response Program

INSPIRED

Investing in Staff Potential and Institutionalising Relevant Empowerment and Development

NNGO EP

National Non-Government Organization Engagement Project

Departments



AMEU

Appraisal, Monitoring and Evaluation Unit

Coordination Unit

INGO Forum Steering Committee, HCT, CCCM Cluster Co-lead

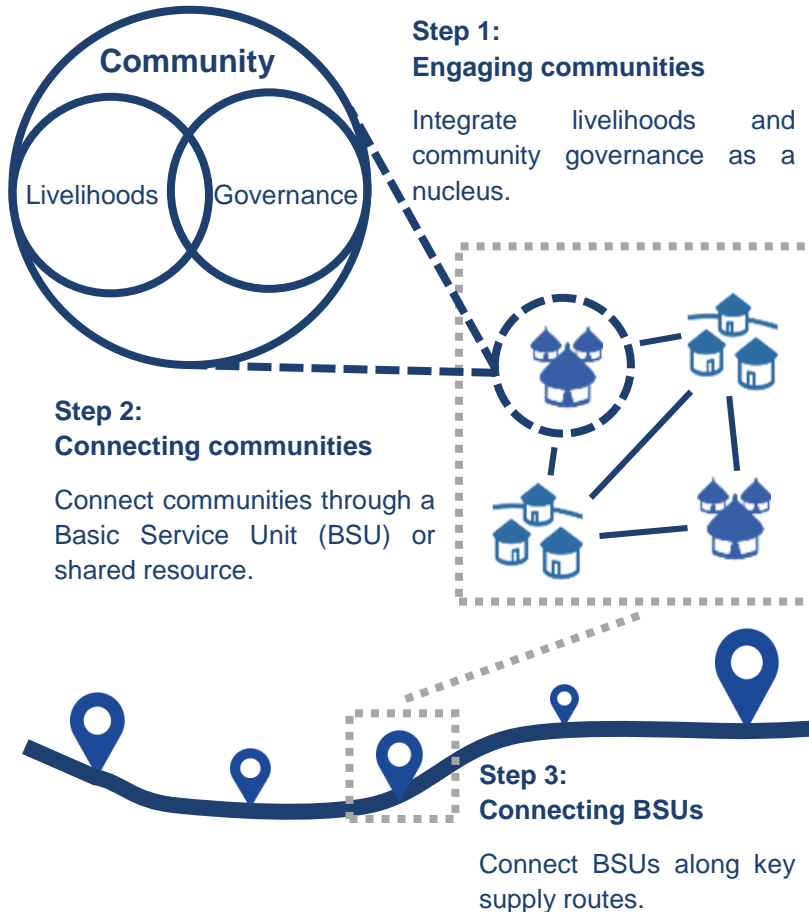
Policy Working Groups

Gender, Environment, Age and disability, Internal positioning

THRIVE

Towards Holistic Resilience in Vulnerable Environments

Approach: Engaging communities to achieve sustainable self-reliance.



Outcome: Social cohesion through integrated value chains and effective natural resource management.

Links with the ACTED global strategic program framework

ACTED South Sudan's strategy fits within the three pillars of ACTED's global strategic program framework which works across the relief, recovery and development pathway.

Pillar 1 | Responding to emergencies and building disaster resilience



Pillar 2 | Co-constructing effective governance

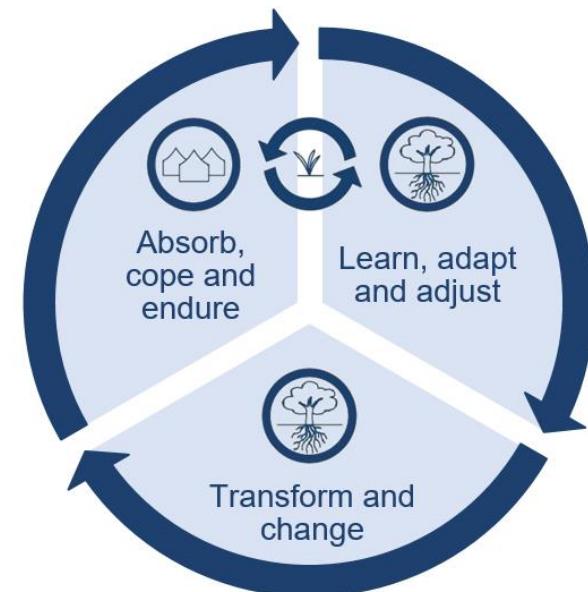


Pillar 3 | Promoting inclusive and sustainable growth



Links with the ACTED global resilience strategy

ACTED South Sudan's programming also fits within the global resilience strategy which emphasises three phases of: absorbing, coping and enduring (CAMPS); learning, adapting and adjusting (ADAPT); and transforming and changing (THRIVE).



CAMPS

Coordinated Action for Multi-Sector Programming in Settlements

Approach: Meeting immediate or basic needs in camps and camp-like settings.

ACTED meets immediate or basic needs through integrated multi-sector programming in various settlement types. ACTED leads on camp coordination and camp management in implementation and strategy, through cluster co-leadership.

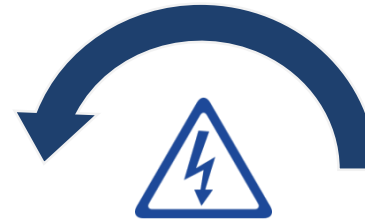


Outcome: Lives saved and sustained in settlements, in a dignified way.

ADAPT

Adapting to Disaster and Preparing for Transition

Approach: Responding to immediate or basic needs and taking steps towards self-reliance.



Step 1: Absorbing shock

At the onset of a shock, cope with disaster and avoid collapse.

Step 2: Adapting and reviving

Recover from a shock and bounce back.



Step 3: Finding durable solutions

Support appropriate returns, reintegration and bouncing back better.

Outcome: Lives saved, sustained and supported back to normalcy after a shock.