



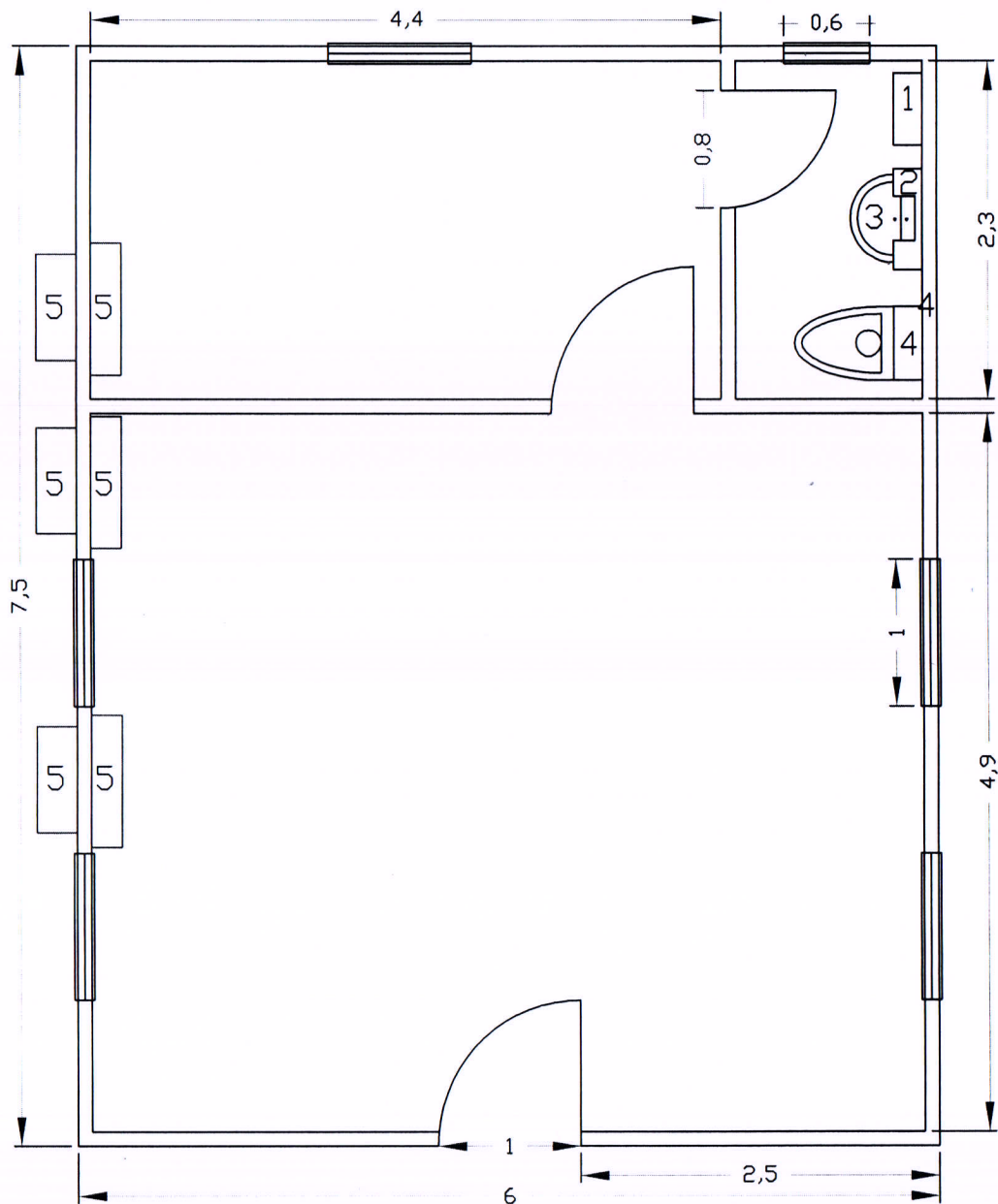
UNHCR

United Nations High Commissioner for Refugees

المفوضية السامية للأمم المتحدة لشؤون اللاجئين



ACTED



LEGEND.

- 1.WATER HEATER 40L CAPACITY.
- 2.60X60 MIRROR WITH BOXES FOR THE HAND WASH BASINS.
- 3.HAND WASH BASIN.
- 4.TOILET SEAT.
- 5.Wall Mountain AC 12000 BTU.

NOTES.

ALL DOORS ARE (IN WAY).

ALL WINDOW MUST BE 1X1M EXCEPT FOR THE TOILET 60X60cm. ALL WINDOWS ARE SLIDE MODE.

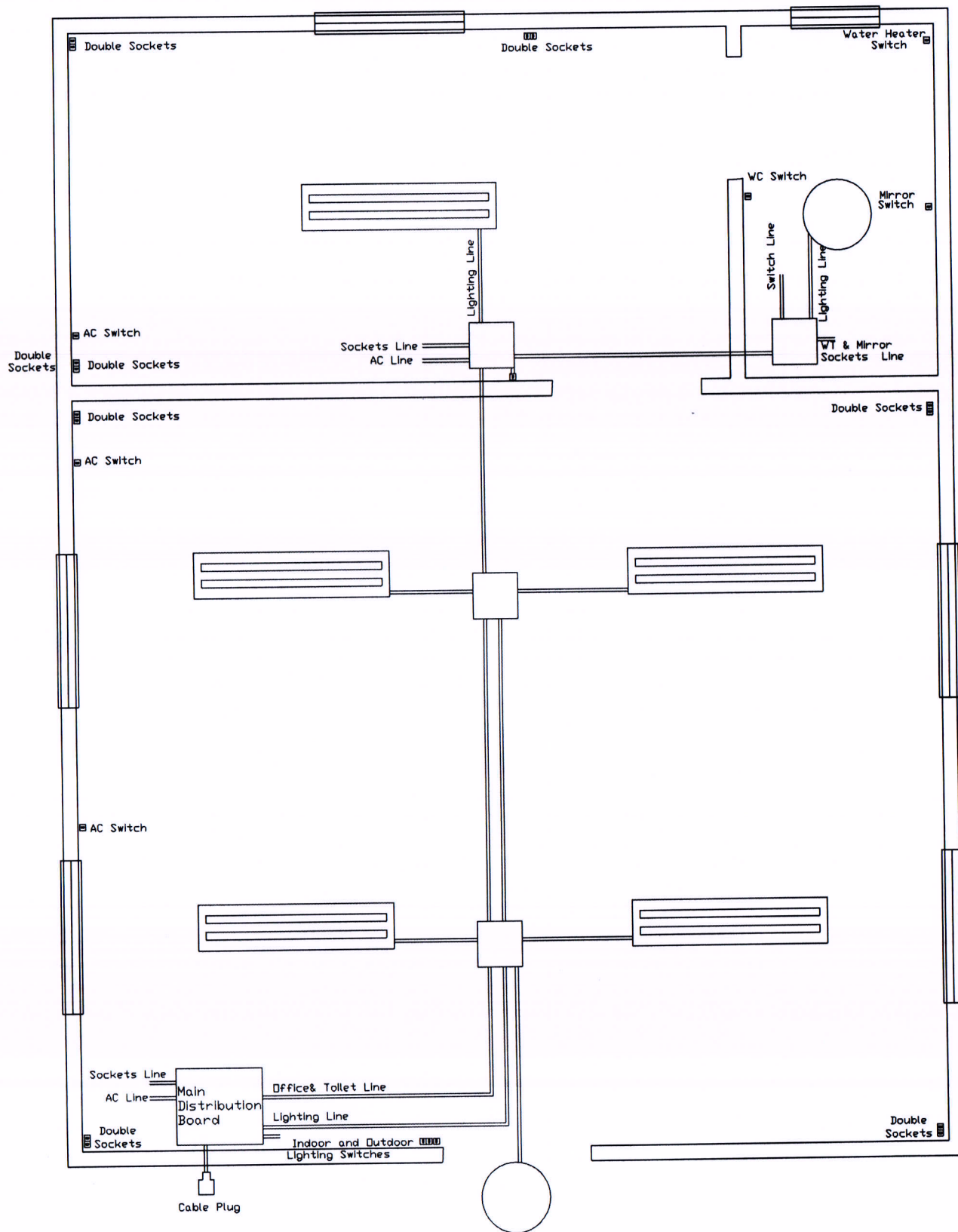


UNHCR

United Nations High Commissioner for Refugees
المفوضية السامية للأمم المتحدة لشؤون اللاجئين



ACTED



NOTES.

1. Use 4MM cross section of wiring for the Sockets.
2. Use 2.5MM cross section of wiring for Lighting.
3. Use 6MM cross section of wiring for ACs and WH