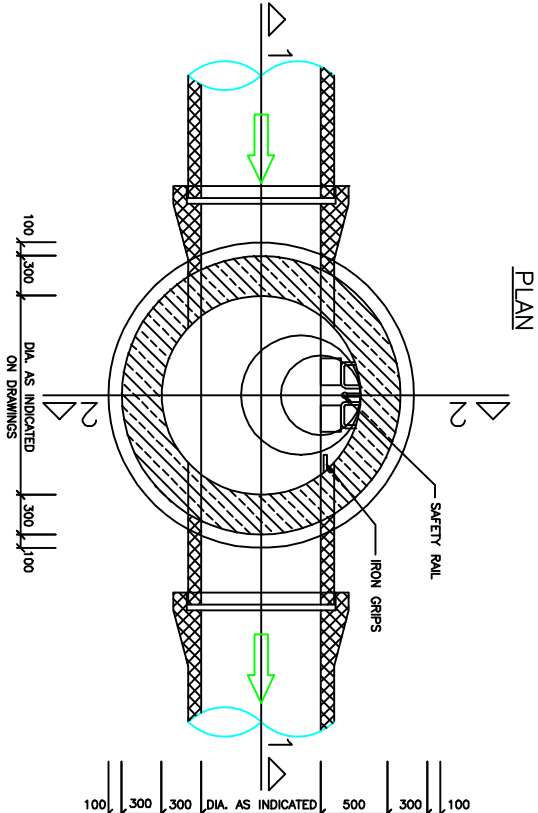
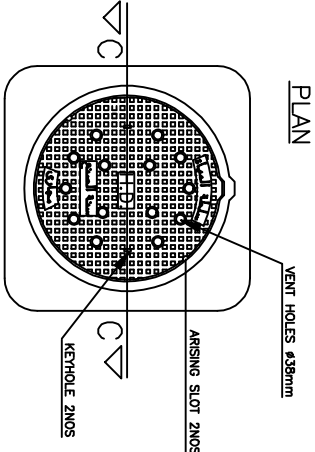


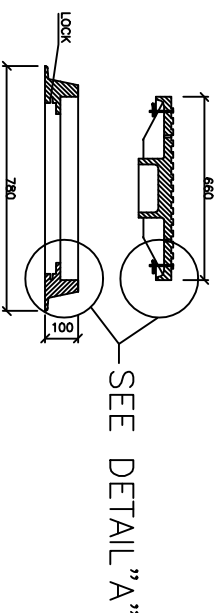
TYPICAL DEEP MANHOLE (CAST IN-SITU)



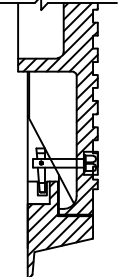
HEAVY DUTY CAST(Material non recyclable)
VENTILATED & LOCKABLE
COVER AND FRAME



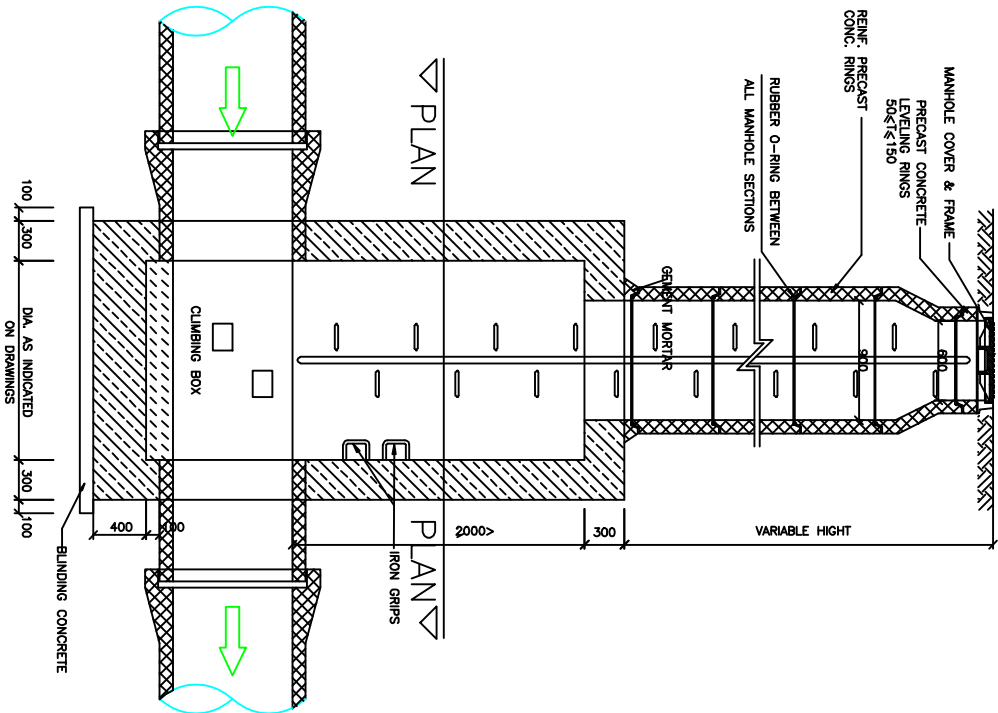
SECTION C-C



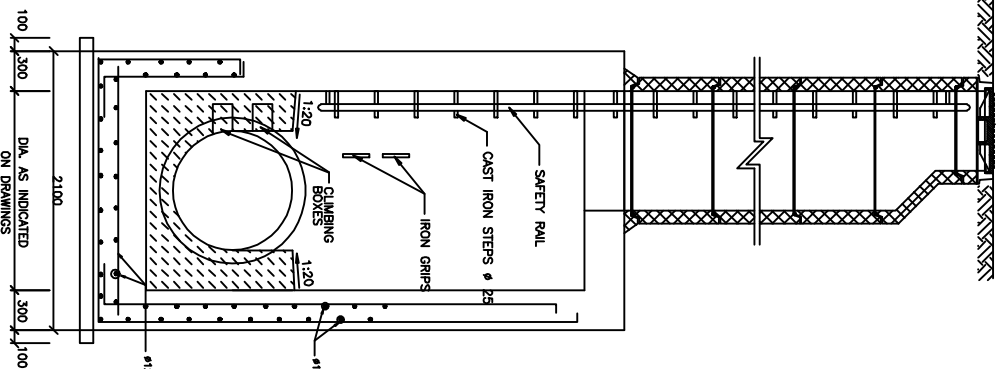
DETAIL "A"



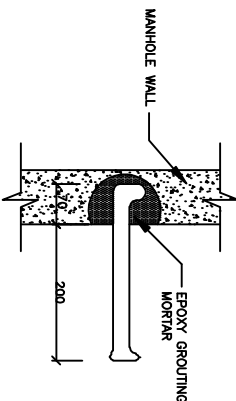
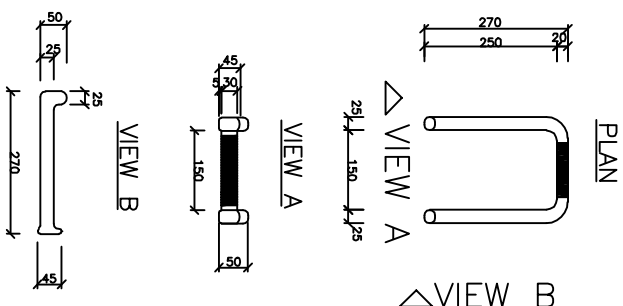
SECTION 1-1



SECTION 2-2

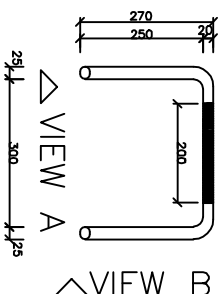


TYPICAL MANHOLE
CAST IRON STEP
FOR DEEP MANHOLES

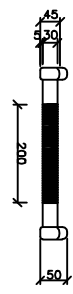


TYPICAL MANHOLE
CAST IRON STEP

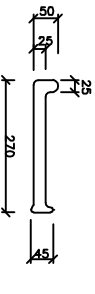
PLAN



VIEW A



VIEW B



NOTES

- 1- ALL DIMENSIONS ARE IN MILLIMETERS UNLESS OTHERWISE INDICATED.
- 2- BENCHING TO BE RAISED UP TO THE PIPES CROWN LEVEL
- 3- IRON GRIPS AND CLIMBING BOXES TO BE PROVIDED FOR PIPES MD 700 AND GREATER
- 4- SAFETY RAIL SHALL BE USED FOR MANHOLES DEEPER THAN 5.00 METERS MANHOLES DEEPER THAN 5.00 METERS
- 5- FOR DEEP TRENCHES SHOULD USE SHEET PILES

REVISIONS

THE HASHEMITE KINGDOM OF JORDAN
MINISTRY OF WATER & IRRIGATION
YARMOUK WATER CO. (L.L.C)



STANDARD DETAILS
Sewer lines

CONTRACTOR :

CONSULTANT :

YARMOUK WATER CO. (L.L.C)

DESIGNED BY	DATE
DRAWN BY	SCALE
CHECKED BY	N.T.S
APPROVED BY	DWG NO: 003