

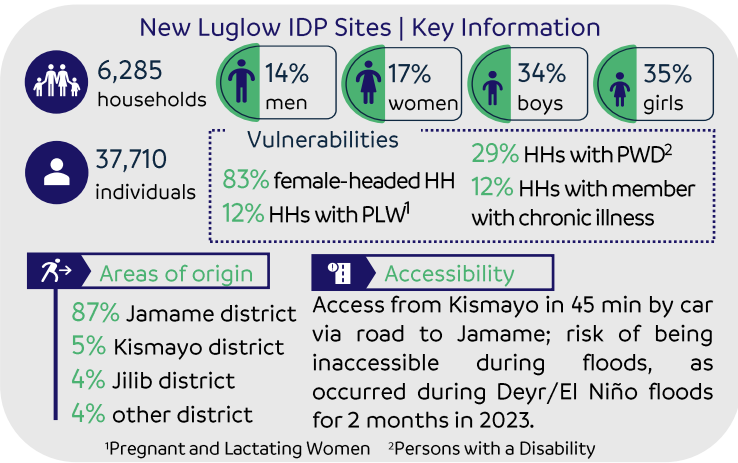
# Flash Report: New Luglow IDP Sites

New Luglow, North Kismayo, Lower-Juba, Jubaland | April 2024



With a camp population of 6,285 households (HH) (37,710 individuals) as per Acted's site monitoring exercise, New Luglow IDP sites were established in November 2023 due to displacements caused by floods, conflict and drought in the area. New Luglow is split into 6 sub-sections. At its peak, the IDP sites hosted over 9,000 households.

Acted, its partner SADO and Jubaland Commission for Refugees and IDPs (JUCRI) conducted an initial assessment in December 2023, followed by a CCCM (Camp Coordination and Camp Management) Cluster-led site verification in February 2024. Acted has engaged in close coordination with humanitarian actors to deliver a multi-sectoral emergency response. As new arrivals continue to be recorded in New Luglow IDP sites (999 HHs in January, 227 HHs in February and 205 HHs in March), urgent gaps in the humanitarian response remain to be addressed.



## Acted provides integrated CCCM support combined with multisectoral humanitarian assistance

MPCA<sup>3</sup> for 1469 HHs | **ongoing**

11 street solar lights | **completed**

245 hygiene kits | **completed**

90 NFI<sup>4</sup> kits | **completed**

104 solar lanterns | **completed**

17 flood-protected latrines | **planned**

Rehabilitation of community road

Temporary community center

3 fire fighting kits

21 street solar lights

Acted has been the CCCM partner in New Luglow IDP sites since December 14, 2023. As the CCCM partner, Acted provides a full package of CCCM activities: coordination of services; community governance; participation and capacity-building; protection mainstreaming; information management; site care and maintenance; gap-filling interventions. In addition, Acted plans to implement the following community-based initiatives (CBIs):

<sup>3</sup>Multi-Purpose Cash Assistance    <sup>4</sup>Non-Food Items

## Humanitarian Response Overview | All Partners<sup>5</sup>

	Humanitarian actors	Ongoing/provided assistance	Planned assistance
WASH   Sanitation	Acted, Alight, Gift of Givers, NRC	72 latrines	199 latrines
WASH   Drinking water	Ministry of Water, UNICEF, VCI	6 trucks (45 liters per household) / day	No additional assistance planned
WASH   Hygiene kits	Acted, AVSI, ICRC, Medair, NRC, VCI	7595 HHs	No additional assistance planned
Shelter/NFI	Acted, AVSI, ICRC, IOM, Medair, Mercy Corps, NRC, UNHCR, VCI	290 temporary shelters, 1590 NFI, 3800 plastic sheets, 104 solar lanterns	2650 NFI kits
MPCA / FA	Acted, Gift of Givers, GIZ, Mercy Corps, SEA/WFP, Towfiq Agency	MPCA (4007 HHs), Food assistance (4600 HHs)	MPCA (1700 HHs), Food assistance (123 HHs)
Education	No partner	School at Istanbul IDP site – no capacity for additional students	No additional assistance planned
Nutrition	Care, Himilo Foundation, SCI	Istanbul Health Centre (<1km), mobile nutrition support	No additional assistance planned
Health	Care, Himilo Foundation, Ministry of Health, SCI	Istanbul Health Centre (<1km), mobile medical support	No additional assistance planned
Protection	Acted, Alight	Protection mainstreaming (referral pathway and outreach mobilization)	No additional assistance planned

<sup>5</sup>The overview reflects feedback received from partners in site-level coordination meetings (December 2023 and February 2024) and from the site mapping and monitoring.

## Response gap

**1 Safe Water**

6 trucks provide 45 liters per HH per day (30 days). Water trucking was confirmed until end of March. There is no safe water source in walking distance and no partner has expressed the intention to continue water trucking or build water sources.

**2 Sanitation**

Many households practice open defecation due to the limited availability of latrines. Despite installed and planned latrines, an additional 458 latrines are required to comply with short-term Sphere standards (50 people/latrine).

**3 Food Security**

As most MPCA/food assistance is completed or ongoing, at least 70% of the current camp population will be uncovered from April onward. In addition, new arrivals in need of MPCA/food assistance continue to be recorded.

**4 Nutrition**

In February, 30 Severe Acute Malnutrition (SAM) and 93 Moderate Acute Malnutrition (MAM) cases were recorded. Only 8 cases are enrolled in a treatment program. Nutrition services are not reaching most SAM and MAM cases.

